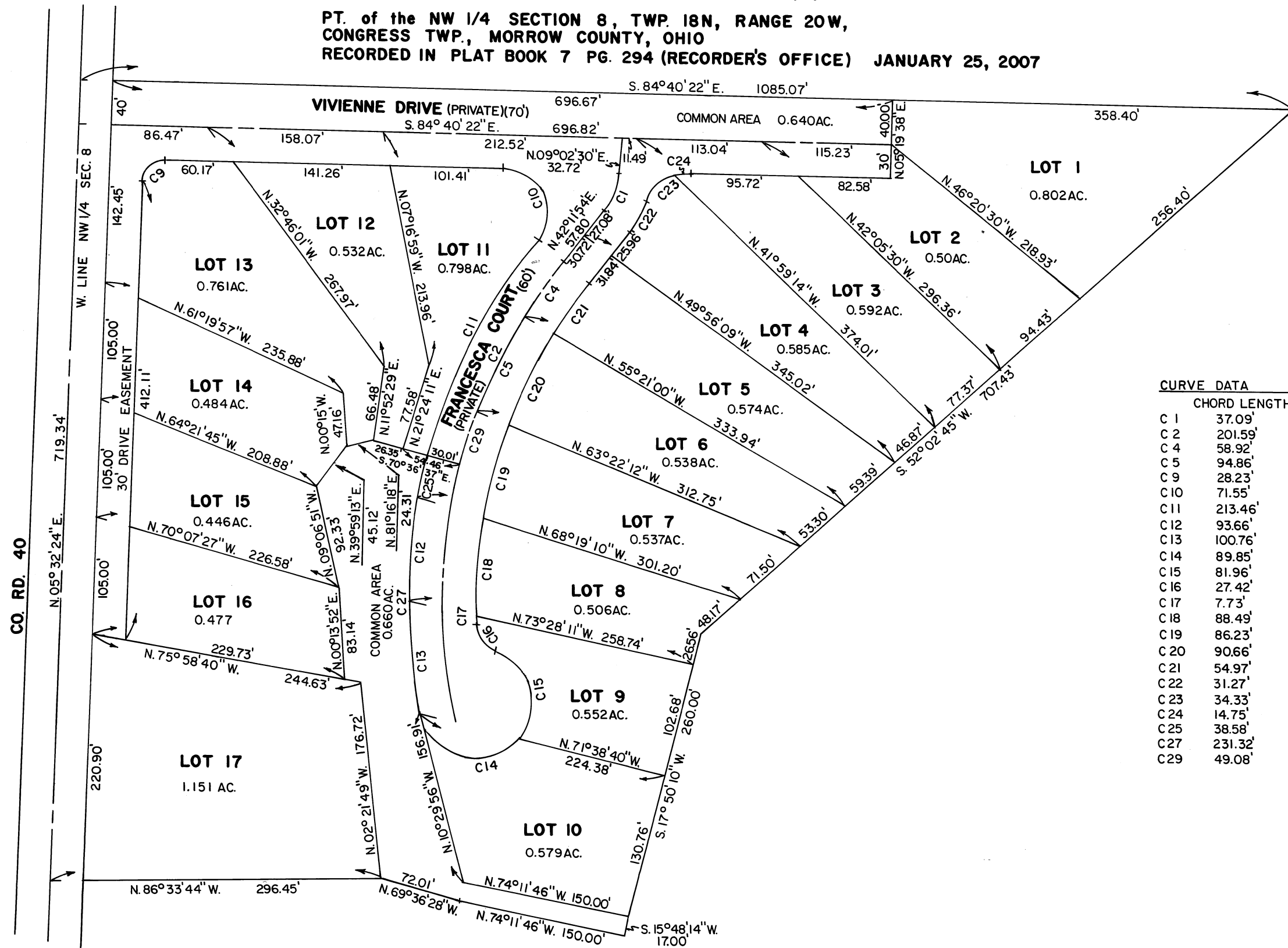
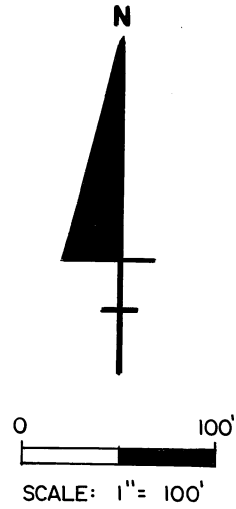


# CANDLEWOOD LAKE UNIT 12 LOTS 1-17

PT. of the NW 1/4 SECTION 8, TWP. 18N, RANGE 20W,  
CONGRESS TWP., MORROW COUNTY, OHIO  
RECORDED IN PLAT BOOK 7 PG. 294 (RECORDER'S OFFICE) JANUARY 25, 2007



CURVE DATA		
	CHORD LENGTH	CHORD BEARING
C 1	37.09'	S. 25° 37' 12" W.
C 2	201.59'	N. 30° 12' 12" E.
C 4	58.92'	N. 38° 42' 57" E.
C 5	94.86'	N. 29° 37' 16" E.
C 9	28.23'	N. 50° 26' 02" E.
C 10	71.55'	S. 21° 14' 14" E.
C 11	213.46'	N. 30° 14' 16" E.
C 12	93.66'	N. 08° 46' 00" E.
C 13	100.76'	N. 02° 03' 54" W.
C 14	89.85'	N. 71° 38' 40" W.
C 15	81.96'	S. 10° 39' 01" E.
C 16	27.42'	N. 32° 25' 53" W.
C 17	7.73'	N. 01° 18' 52" E.
C 18	88.49'	N. 07° 22' 53" E.
C 19	86.23'	N. 18° 23' 55" E.
C 20	90.66'	N. 29° 33' 14" E.
C 21	54.97'	N. 38° 44' 06" E.
C 22	31.27'	S. 32° 43' 36" W.
C 23	34.33'	N. 48° 40' 04" E.
C 24	14.75'	S. 84° 42' 14" W.
C 25	38.58'	N. 16° 07' 50" E.
C 27	231.32'	N. 05° 17' 56" E.
C 29	49.08'	N. 21° 06' 31" E.